



CLUSTER

Customized dramatic and natural group of lashes



PT Mahkota Tri Angjaya as well-known as PT MATA was established in 2008 and has been certified ISO 9001:2015, ISO 14001:2015 and ISO 45001:2018. PT MATA commits to do good company reputation by producing eyelashes with consistent product quality, competitive price, and optimum production leadtime.

PT MATA has been conducting continuous improvements and innovations in producing eyelashes to satisfy demands of our customers. Participating in annual exhibitions such as Cosmoprof Asia in Hongkong and Cosmoprof Bologna in Italy is absolutely to indicate the existence and strong commitment of this company to be one of leading eyelashes company in the world.

PT MATA exports 1.500.000 knittings of eyelashes worldwide monthly. Our market is United States, South America, Europe, Asia and Africa.





DUO 8M-03



DUO 8P1-03



DUO 8P1-04



DUO 8SJ-03





DUO 8SJ-04



DUO 8SJ-05



INNER 8LJ-01



INNER 8LJ-02



INNER 8LT-01



INNER 8M-01



INNER 8M-02



INNER 8P1-01







OUTER 8LJ-01



OUTER 8LJ-02



OUTER 8LT-01



OUTER 8M-01





OUTER 8M-02



OUTER 8P1-01



OUTER 8P1-02



OUTER 8SJ-01





OUTER 8SJ-02

OUTER 8SL-01



QUATRO 8M-03

QUATRO 8P1-01



QUATRO 8P1-03



QUATRO 8P1-04

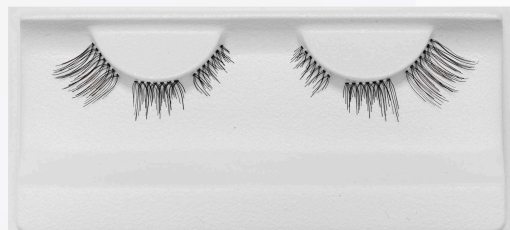


QUATRO 8SJ-04



QUATRO 8SJ-05







FABULOUS AT THE FIRST SIGHT



CERT NO.: 2016-1-0966
ISO 9001 : 2015



CERT NO.: 2019 - 0773
ISO 14001 : 2015



CERT NO.: OHS-45001-2020-0194
ISO 45001 : 2018

PT MAHKOTA TRI ANGJAYA

Indonesia Eyelashes Design & Manufacture

Green the future, beauty gets its nature

www.mata-lashes.com

CONTACT US

Yonathan Adiguna

✉ yonathanadiguna@mata-lashes.com

☎ +6281214461120

Nabila Rachel

✉ nabilarachel@mata-lashes.com

☎ +6282226286980

ADDRESS

PT MAHKOTA TRI ANGJAYA

Jl. S. Parman Km 02

Kedungmenjangan - Purbalingga 53315

Central Java - Indonesia