



# WISPIES

Light criss-cross layered lash for a natural look





**PT Mahkota Tri Angjaya** as well-known as PT MATA was established in 2008 and has been certified ISO 9001:2015, ISO 14001:2015 and ISO 45001:2018. PT MATA commits to do good company reputation by producing eyelashes with consistent product quality, competitive price, and optimum production leadtime.

PT MATA has been conducting continuous improvements and innovations in producing eyelashes to satisfy demands of our customers. Participating in annual exhibitions such as Cosmoprof Asia in Hongkong and Cosmoprof Bologna in Italy is absolutely to indicate the existence and strong commitment of this company to be one of leading eyelashes company in the world.

PT MATA exports 1.500.000 knittings of eyelashes worldwide monthly. Our market is United States, South America, Europe, Asia and Africa.





**P1-03**



**P1-06**



**P1-07**



**P1-16**





**P1-17**



**P1-18**



**P1-21**



**P1-45**





P1-68



P1-74



P1-78



P1-84



P1-85



P1-86



P1-87



P1-89





**P1-90**



**P1-95**



**P1-97**



**P1-98**



**P1-109**



**P1-115**



**P1-116**



**P1-117**





**P1-118**



**P1-119**



**P1-120**



**P1-121**



**P1-122**



**P1-123**



**P1-124**



**P1-125**

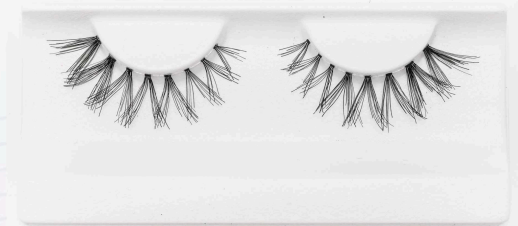




**P1-126**



**P1-127**



**P1-128**



**P1-129**



P1-130



P1-131



P1-132



P1-134





FABULOUS AT THE FIRST SIGHT



CERT NO.: 2016-1-0966  
ISO 9001 : 2015



CERT NO.: 2019 - 0773  
ISO 14001 : 2015



CERT NO.: OHS-45001-2020-0194  
ISO 45001 : 2018

# PT MAHKOTA TRI ANGJAYA

## Indonesia Eyelashes Design & Manufacture

*Green the future, beauty gets its nature*

[www.mata-lashes.com](http://www.mata-lashes.com)

### CONTACT US

Yonathan Adiguna

✉ [yonathanadiguna@mata-lashes.com](mailto:yonathanadiguna@mata-lashes.com)

☎ +6281214461120

Nabila Rachel

✉ [nabilarachel@mata-lashes.com](mailto:nabilarachel@mata-lashes.com)

☎ +6282226286980

### ADDRESS

PT MAHKOTA TRI ANGJAYA

Jl. S. Parman Km 02

Kedungmenjangan - Purbalingga 53315

Central Java - Indonesia